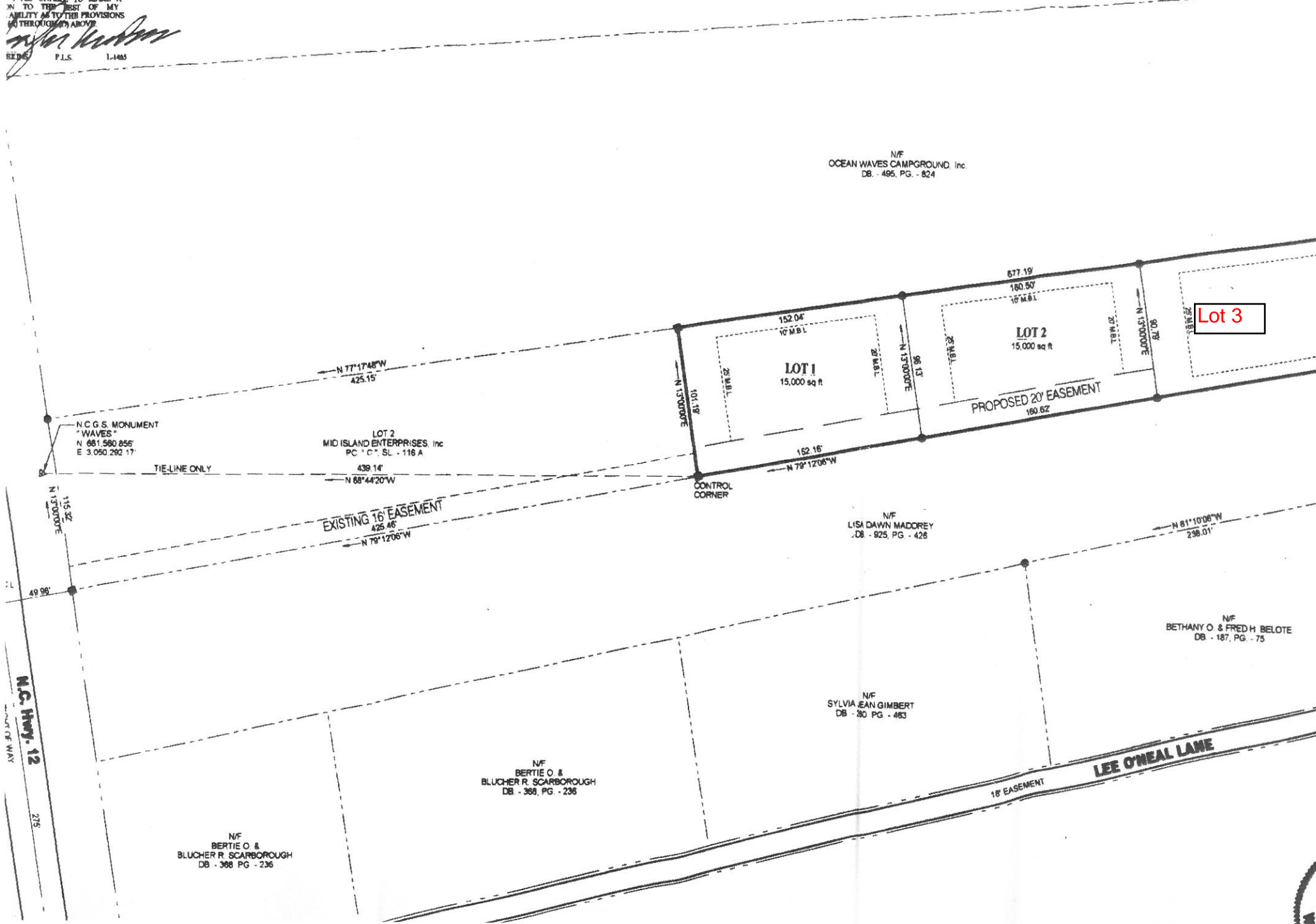


THE SURVEY IS OF ANOTHER  
 CH AS THE RECOMBINATION OF  
 PLS. A COURT-ORDERED SURVEY.  
 REFERENCE TO THE DEFINITION OF

INFORMATION AVAILABLE TO ME  
 I AM UNABLE TO MAKE A  
 ON TO THE BEST OF MY  
 ABILITY AS TO THE PROVISIONS  
 (6) THROUGH (7) ABOVE

*John Henderson*  
 BEDES P.L.S. 1-1485

- 8.) TOTAL NUMBER OF LOTS CREATED: 3
- 9.) AREA OF SMALLEST LOT: 15,000 sq ft
- 10.) MINIMUM BUILDING SETBACKS:  
 25' FRONT  
 10' SIDE  
 20' REAR



N/F  
 OCEAN WAVES CAMPGROUND, Inc.  
 DB - 495, PG. - 824

**Lot 3**

N.C.G.S. MONUMENT  
 "WAVES"  
 N 881,580.856'  
 E 3,050,282.17'

LOT 2  
 MID ISLAND ENTERPRISES, Inc.  
 PC 'C', SL - 116 A  
 439.14'

N/F  
 LISA DAWN MADDOREY  
 DB - 925, PG. - 426

N/F  
 BETHANY O. & FRED H. BELOTE  
 DB - 187, PG. - 75

N/F  
 SYLVIA JEAN GIMBERT  
 DB - 20 PG. - 483

N/F  
 BERTIE O. &  
 BLUCHER R. SCARBOROUGH  
 DB - 368, PG. - 236

N/F  
 BERTIE O. &  
 BLUCHER R. SCARBOROUGH  
 DB - 368 PG. - 236

N.C. Hwy. 12  
 215'

LEE O'NEAL LANE  
 18' EASEMENT